

Large data transfer service



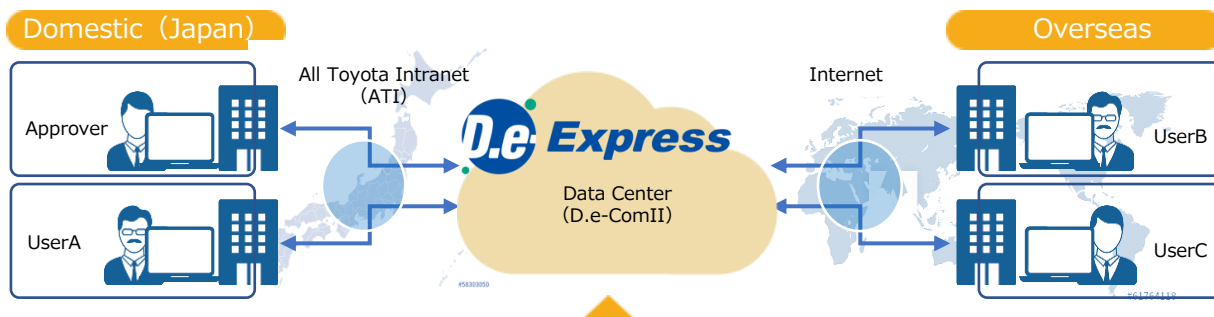
EDI


Troublesome Circumstances



- Difficult to maintain multiple EDI services for each business connection.
- Range delay occurs when transferring data overseas.
- Need to send large capacity data, but dividing data takes time.

The Ideal State



 **Can be used with Internet connection all around the world with security measures in place**

- High speed communication technology applied.
- Communication encryption and storage data encryption technology applied.



Can easily send data to users that are not registered to the service

- Able to send data to users that are not registered. (Has limitations in function)



Send large capacity data without dividing the data

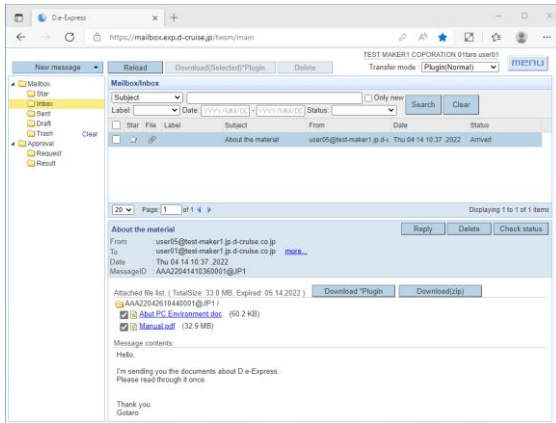
- Able to send large capacity data over 2GB with one transaction.



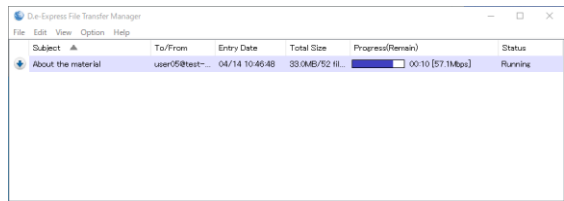
Reasonable price setting

- Charged by registered ID numbers (To use over 100GB/month required a paid option)
- Service fee is charged to the company which sends data (Owner of the service)

Intuitive interface similar to Web e-mail



- The user interface that looks like a Web E-mail makes easy to use.
- Display the status of Upload/Download on File Transfer Manager



Provided Functions

Exchanging	
Sending / Receiving / Replying	Sending / Replying data to (or Receiving data from) individual user or group.
Deleting	Deleting message manually and automatically.
Transferring Status	Check sent/received data status.(Arrived/Downloaded etc.)
Notification	Noticed arriving message by e-mail and indicating number of new coming message on D.e-Express screen.
Approval	Send message after the approval.
Data Transferring in Background	Available to use other operation during data transfer, and retry automatically on unstable network condition.
Simple Sending / Receiving	Sending /Receiving data without Plug-in. (Some functions not useable)
One Time Sending	Available sending to unregistered user.
Report-To	Send a message with notification(arrived and downloaded) e-mail to specified address.
Cancel Sent Message	Cancel sent messages and attached files.
Address Book	Saving user e-mail address that can use for sending.
Data Encryption	Confidential data can be saved in encrypted.
Draft Saving / Editing	Saving drafted message and use it on data transfer.
Configuring Notification	Configuring (ON or OFF) Notification e-mail on situations(Arrived, Downloaded etc.).
Setting expiry date for sending message	Available keeping days when sending message. Default 30 days or less (Default 15 days or less for One Time Sending)
Additional password on Attachment Files	Setting a special password for download operation. (Password is noticed automatically by e-mail)
Administration	
Log viewer	Check and download log of user's message operations for managers and approvers.
Data usage amount viewer	Viewing the monthly data usage amount of each contract.
Registration Information	Check and download application form of registration information.
Options	
High-speed	Providing multiplexing connection that's increase connection speed. Good for data transferring with overseas.
Additional data usage amount	Adding data usage amount (Required to use over 100GB/month)
Application interface (API)	Provides a programmatic interface to perform automatic data transfer controlled from other systems.
IP address control	Configuring users who can only use D.e-Express from specific IP address.
Monitoring usage / alert	Providing sending data transfer or approval log of last month for each company.

Requirements *1*2*3

The environment where the Service operations were confirmed is as follows.

Windows 10 (Only 64-Bit Edition) / Windows 11
 - Google Chrome (64-Bit Edition)
 - Microsoft Edge (64-Bit Edition)
 * Only the Chromium-based Microsoft Edge is usable.

- *1 In some case, the Service cannot be used in your environment.
- *2 In order to use all the functions of the Service, it is necessary to use the D.e-Express plug-in installed.
- *3 In case that it is difficult to install the plug-in due to conveniences of the PC environment or the like, you can send / receive data by using the Simple Sending/Receiving function.

- D.e-Express servers are located in Japan and all transfer data is stored in those servers.
- Our customers have to comply with all regulations both of domestic and international including regulation for transfer personal data to the third country.
- Our company shall not be liable for damages caused by customers' violation of regulations.



TOYOTA SYSTEMS CORPORATION

Phone : +81-050-3142-7889 Mail : helpdesk01@tns.toyotasystems.com
 URL : <https://www.toyotasystems.com>



Ver1.4 2023